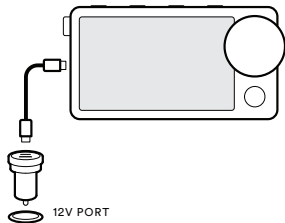


Setting up



1 Connect to power

Plug the power adapter into your car's 12V port and turn your ignition on. Connect Car Thing to the power adapter with the supplied USB cable.

Important:

Don't set up, mount, or adjust Car Thing while driving.



2 Point your phone's camera at the image above

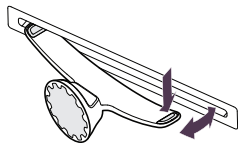
Tap the link that appears to start the setup flow.

Or open the Spotify app on your phone and go to Settings > Car > Car Thing > Setup Car Thing.

Need help? support.spotify.com

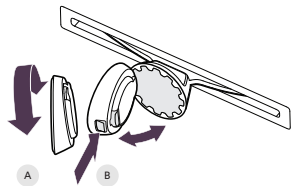
CD mount

- 1 Adjust and fit mount



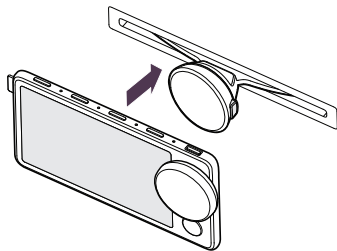
Note: Make sure your CD player is empty before inserting the mount.

- 2 Adjust puck and attach to mount



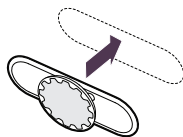
- A Rotate the puck to find the best angle before attaching it.
- B Press the button on the puck and push it into the mount.

- 3 Attach Car Thing to puck



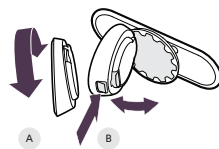
Dash mount

- 1 Stick mount to dashboard



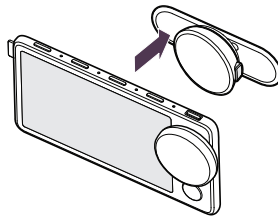
Tip: The mount sticks better to a clean surface. Use the cloth provided in the box.

- 2 Adjust puck and attach to mount



- A Rotate the puck to find the best angle before attaching it.
- B Press the button on the puck and push it into the mount.

- 3 Attach Car Thing to puck



Vent mount

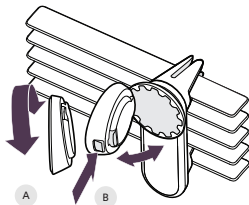
Mount Car Thing as high as possible for best microphone performance

1 Adjust and fit mount



Tip: Rotate and slide the prongs to fit your vent.

2 Adjust puck and attach to mount



A Rotate the puck to find the best angle before attaching it.

B Press the button on the puck and push it into the mount.

3 Attach Car Thing to puck

